

Pumping Operation Equipment Catalogue: Pumping Equipment

DMD - 3600 PUMP UNIT

The PAI Model DMD-3600 Pump Package is designed for a broad range of pumping applications requiring high volume and high pressure. The standard DMD-3600 pump is powered by a Caterpillar Model C-27 diesel engine producing 850 HP @ 1,800 RPM.

Suitable to work in Zone 2 with Pyroban Internal Spark Arrestor. 10" # 150 suction and 10" # 600 discharge, fitted with biscuit type discharge Check Valve NRV, pressure gauge.

Pump is driven by a Caterpillar 850HP model C27 Diesel engine. Pump and Engine mounted on a extreme duty Oilfield skid with lift frame protection rack, discharge check valve and urathane coating system.

Skid mounted with all standard accessories for operating.



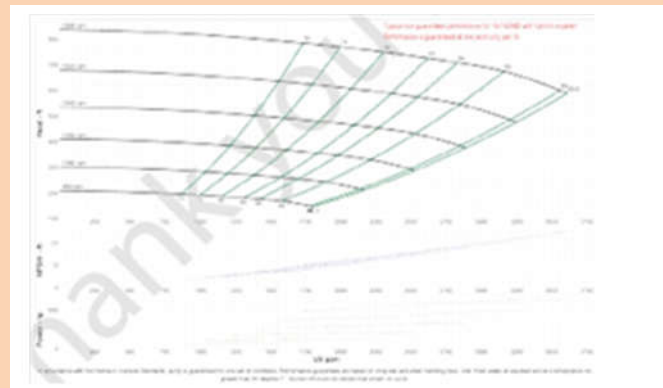
PAI MODEL DMD - 3600 PUMP UNIT

SPECIFICATIONS:

Model: High Head/High Flow DMD-3600 Centrifugal Pump

Performance @ 1800 RPM

Flowrate (GPM)	Pressure (PSI)
3600	242
3200	281
2800	303
2000	330
1600	346



Max Flow Rate: 3600 GPM

Max Pressure: 346 PSI

*Using two Pumps in series will produce 600 PSI "pack off" pressure.

Weight: 24,500 lbs

Dimensions: 84" W X 20'-0" L X 9'-10" H

FEATURES

- Compact Size
- PAI Patterson Two Stage Pump Bronze Fitted, Packed
- 10" suction X 10" Discharge w/Discharge Check Valve
- Heavy Duty Skid Base with Protection Frame, Multiple Point Lift, Forklift Slots, and Pipe Ends for Tail Boarding
- The Pump is a Patterson DMD two stage 10" x 10" horizontal split case centrifugal, ductile iron case, with 19.5" bronze impeller, stainless steel wear sleeves and packed stuffing box.